



RAINFOREST RETREAT, VILLAS  
& LOST WORLD SPA

## — Weddings —

Nestled in the Gold Coast Hinterland, surrounded by the lush rainforest of World Heritage listed Lamington National Park, O'Reilly's Rainforest Retreat offers the perfect escape for you to celebrate your special day.

Imagine breathtaking mountain scenery, cliff-top lookouts and spectacular sunsets. Our venues suit weddings from 20 to 175 guests in a variety of styles to accommodate all preferences.

*The picturesque surroundings, accompanied by amazing views, also makes this an ideal location for engagements, or proposals.*

O'Reilly's Rainforest Retreat is located a scenic 2 hour drive south of Brisbane and 90 minutes from the Gold Coast. O'Reilly's enjoys cool mountain air and spectacular views over the McPherson Ranges and Great Dividing Range to the West.

PHONE: (07) 5502 4900 | EMAIL: [weddings@oreillys.com.au](mailto:weddings@oreillys.com.au)

WEBSITE: [www.oreillys.com.au/weddings](http://www.oreillys.com.au/weddings)

FACEBOOK: [www.facebook.com/OReillysRainforestRetreat](http://www.facebook.com/OReillysRainforestRetreat)



# Ceremony Venues



## *Moonlight Crag (Cliff Top Deck)* **\$2,000**

Walk through the rainforest and step out to a magical three tiered cliff top platform with breathtaking views of the Lost World Valley and Great Dividing Range.

### INCLUDES:

- Venue hire
- Seating for up to 20 guests during the ceremony  
(Extra seating available, costs will depend on availability)
- Dressed registry table and chair
- A 4WD and driver for 1 ½ hours for Bridal Party location shots
- Celebratory sparkling wine for the Bridal Party during photos
- Return 4WD guest transfers (up to 80 guests)  
(Additional buses available at \$150 per bus, seats 20 guests)



## *St Joseph's Church* **\$500**

This small historical church was built in 1858 and was moved to O'Reilly's in 1951, previously owned by the Roman Catholic Archdiocese.

### Includes:

- Venue hire
- Seating for up to 60 guests during the ceremony
- Dressed registry table and chair
- A 4WD and driver for 1 ½ hours for Bridal Party location shots
- Celebratory sparkling wine for the Bridal Party during photos.

\* Prices valid until 31st March 2016

## *Luke's Bluff* **\$,2000**

Located on top of a spectacular sheer cliff face, Luke's Bluff offers panoramic views to the west.

### INCLUDES:

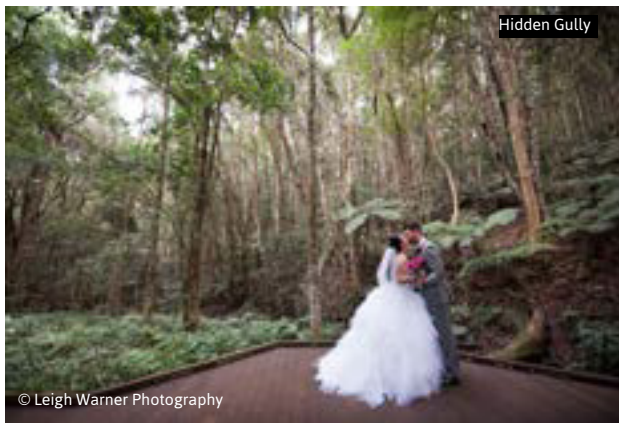
- Venue hire
- Seating for up to 20 guests during the ceremony  
(Extra seating available, costs will depend on availability)
- Dressed registry table and chair
- A 4WD and driver for 1 ½ hours for Bridal Party location shots
- Celebratory sparkling wine for the Bridal Party during photos.
- Return 4WD guest transfers (up to 80 guests)  
(Additional buses available at \$150 per bus, seats 20 guests)

## *Hidden Gully* **\$500**

O'Reilly's 'Hidden Gully' is a magical venue perfect for saying your 'I do's'. Nestled in secluded rainforest setting, it offers the opportunity to be at one with nature on your special day.

### INCLUDES:

- Venue hire
- Bench seating for up to 20 guests during the ceremony
- Dressed registry table and chair
- A 4WD and driver for 1 ½ hours for Bridal Party location shots
- Celebratory sparkling wine for the Bridal Party during photos.



PHONE: (07) 5502 4900 | EMAIL: [weddings@oreillys.com.au](mailto:weddings@oreillys.com.au)  
WEBSITE: [www.oreillys.com.au/weddings](http://www.oreillys.com.au/weddings)  
FACEBOOK: [www.facebook.com/OReillysRainforestRetreat](http://www.facebook.com/OReillysRainforestRetreat)

# Reception Venues

---

NOW 4  
VENUES

## *Lost World Conference Centre & Terrace*

**Venue hire \$1,000**

(minimum 50, maximum 175 guests)

The private Lost World Conference Centre & Terrace seats up to 150 guests and includes a bar and terrace with breathtaking views over the infinity pool to the McPherson and Great Dividing Ranges. The spectacular setting provides the perfect environment for a magical wedding reception as well as the perfect venue to enjoy the spectacular sunsets.

## *Log Fire Room*

**Venue hire \$500**

(minimum 10, maximum 35 guests)

A unique rustic venue enriched by O'Reilly pioneering history, the Log Fire Room is charmingly simple, perfect for an intimate ceremony.

## *Pavilion*

**Venue hire \$850**

(minimum 30, maximum 120 guests)

An indoor-outdoor venue where guests can spill onto the front lawn to enjoy pre dinner drinks and a spell binding view as the sun sets.

## *Mountain Cafe*

**Venue hire \$850**

(minimum 30, maximum 80 guests)

Available evenings only, the cafe has a private balcony overlooking the sunset and a wood lined function room (5pm-11pm).

---



© Leigh Warner Photography



# Food & Beverage Options

## Tranquil Wedding Package

**2 course - \$100 per person** (minimum 50 guests)

**3 course - \$110 per person** (minimum 50 guests)

PACKAGE INCLUDES:

- ½ hour of canapés service
- Two **OR** three course menu selection, with two choices per course, alternate serve

## Shared Plates

**\$105 per person** (minimum 30 guests)

PACKAGE INCLUDES:

- ½ hour of canapés service
- Main & dessert selection + O'Reilly's baked breads per table

## Gourmet BBQ w Interactive Chef

**\$95 per person** (minimum 30 guests)

PACKAGE INCLUDES:

- Chef cooked BBQ with desserts

*Complimentary extras including wishing well or antique birdcage, dressed cake & gift tables, inhouse audio visual, chair covers with coloured sash, and a centrepiece with styling from our range, with wedding packages.*

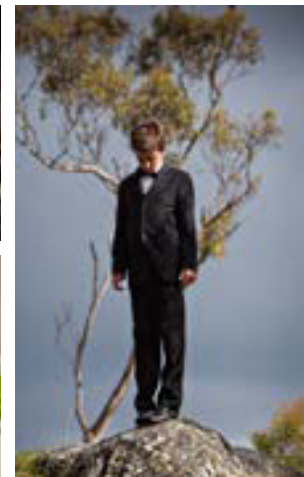
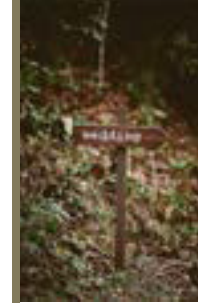
## Four Hour Beverage Package

**O'Reilly's Range** | \$40 per person

**Satin Range** | \$45 per person

**Regent Range** | \$50 per person

*Additional hours available at reduced rate +  
Beverages on consumption*



# Guest Accommodation

## O'Reilly's Villas

### Villa

Two and three bedroom villas are set amongst the rainforest and mountain vistas of surrounding Lamington National Park. The Villas provide the perfect nature escape offering private, spacious and contemporary luxury accommodation designed to connect with the natural surroundings. Fully self-contained, with each bedroom having its own private ensuite, the Villas provide the perfect accommodation style for family and friends.

Each villa is equipped with full kitchen, lounge room with fireplace, wireless internet access plus entertaining deck with spa, BBQ and outdoor table. All villas have a minimum two nights stay.



## O'Reilly's Rainforest Retreat

### Mountain View Room

Our Retreat has been welcoming visitors to Lamington National Park for over 88 years and is dedicated to providing traditional, Australian hospitality in a spectacular natural setting. The Retreat offers a range of 3.5 star accommodation to suit all requirements, from single rooms through to luxurious One and Two Bedroom Canopy Suites. A minimum 2 nights stay applies when booking over a Saturday night and long weekends.



PHONE: (07) 5502 4900 | EMAIL: [weddings@oreillys.com.au](mailto:weddings@oreillys.com.au)

WEBSITE: [www.oreillys.com.au/weddings](http://www.oreillys.com.au/weddings)

Facebook: [www.facebook.com/OReillysRainforestRetreat](http://www.facebook.com/OReillysRainforestRetreat)

ENQUIRE  
about our room  
& honeymoon  
packages

# The Lost World Spa

O'Reilly's Lost World Spa is a true nature haven for rejuvenation, relaxation and balance.

The Spa features seven treatment rooms, including a luxurious couples suite with unique vinotherapy tub that uses the anti-oxidant power of grapes from O'Reilly's own Vineyard as a rejuvenating treatment.

The couples suite features a private steam room, plus shower with rainforest views. O'Reilly's Lost World Spa is ideal for bridal showers, pre-wedding pampering, or as a romantic treat for yourself and your new spouse.

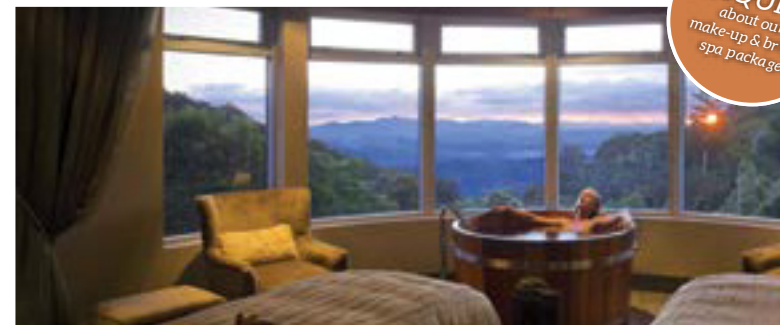
## Vinotherapy Bridal Ritual

**\$365 per person** - Duration: 3 hours (sparkling wine included)

Spoil yourself before your wedding day! Indulge in the Lost World Spa Vinotherapy Bridal Ritual which will leave your body and soul relaxed and rejuvenised.

Begin your ritual gently in a private steam room to relax muscles and slow the mind before a full body exfoliation with red grape extracts to soften and smooth your skin. Continue your journey with a vinotherapy-infused body mask to firm and nourish whilst enjoying a relaxing scalp massage in your warm cocoon. Rinse off in the beautiful stone shower overlooking the natural environment then surrender to a deeply relaxing full body massage.

Conclude your ritual with a warm, aromatic soak in the tub, enhanced by the Spa's signature vino therapy bath blend while sipping on wine and enjoying the magnificent view.



ENQUIRE  
about our  
make-up & bridal  
spa packages